



# MONTHLY MEMBERSHIP PROGRESS REPORT

District 27 E2

Results as of: 02/28/2019

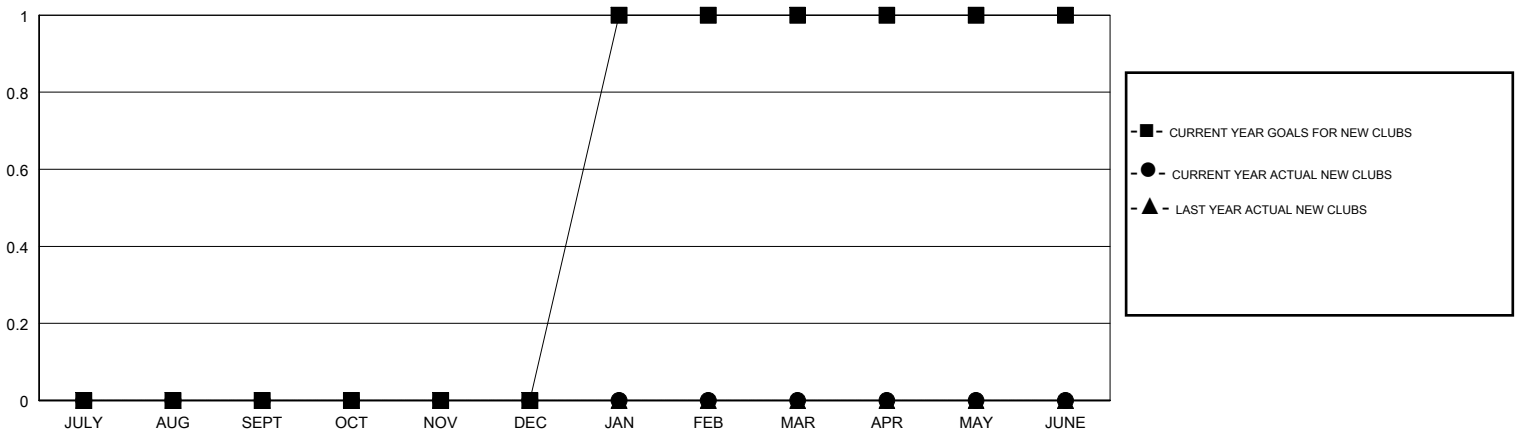
GMT: OPEN

LOCATION WISCONSIN

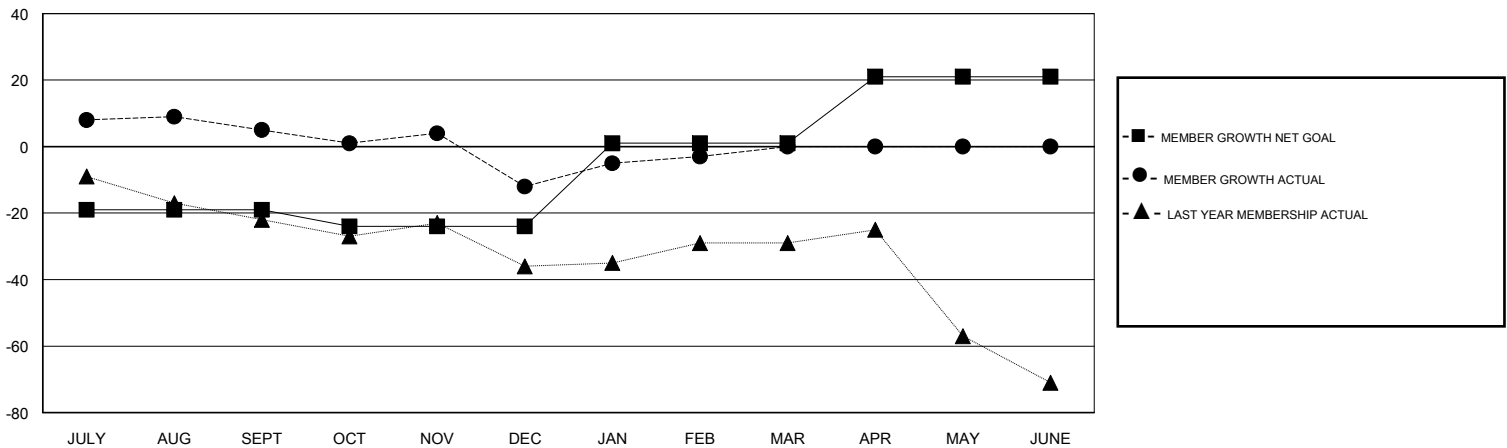
GMT CA

Clubs				Members			
RESULTS FOR 2018-2019				RESULTS FOR 2018-2019			
QUARTER	NEW CLUB GOAL	NEW CLUBS	DROPPED CLUBS	QUARTER	MEMBER GROWTH NET GOAL	MEMBER GROWTH ACTUAL	DROPPED MEMBERS ACTUAL (including transfers)
JULY/AUG/SEPT	0	0	0	JULY/AUG/SEPT	-19	30	23
OCT/NOV/DEC	0	0	0	OCT/NOV/DEC	-5	28	43
JAN/FEB/MAR	1	0	0	JAN/FEB/MAR	25	25	13
APR/MAY/JUNE	0	0	0	APR/MAY/JUNE	20	0	0

GOALS AND ACTUAL NEW CLUBS CUMULATIVE



GOALS AND ACTUAL MEMBERS CUMULATIVE



DROPPED CLUBS: 0	26 CLUBS OF 46 ADDED 1 OR MORE NEW MEMBERS	<u>GENDER DISTRIBUTION</u>
DROPPED MEMBERS	<a href="#">CLICK HERE FOR CUMULATIVE MEMBERSHIP DATA</a>	MALE 1,301 (77.63%)
DECEASED 19		FEMALE 375 (22.37%)
CLUB CANCELLED 0		Women Percentage Fiscal Year Goal: 25%
OTHER 60		TOTAL FAMILY UNIT MEMBERS 249
TOTAL 79		FAMILY MEMBERS PAYING HALF DUES 125